

Sturgeon
Island
over the
Years

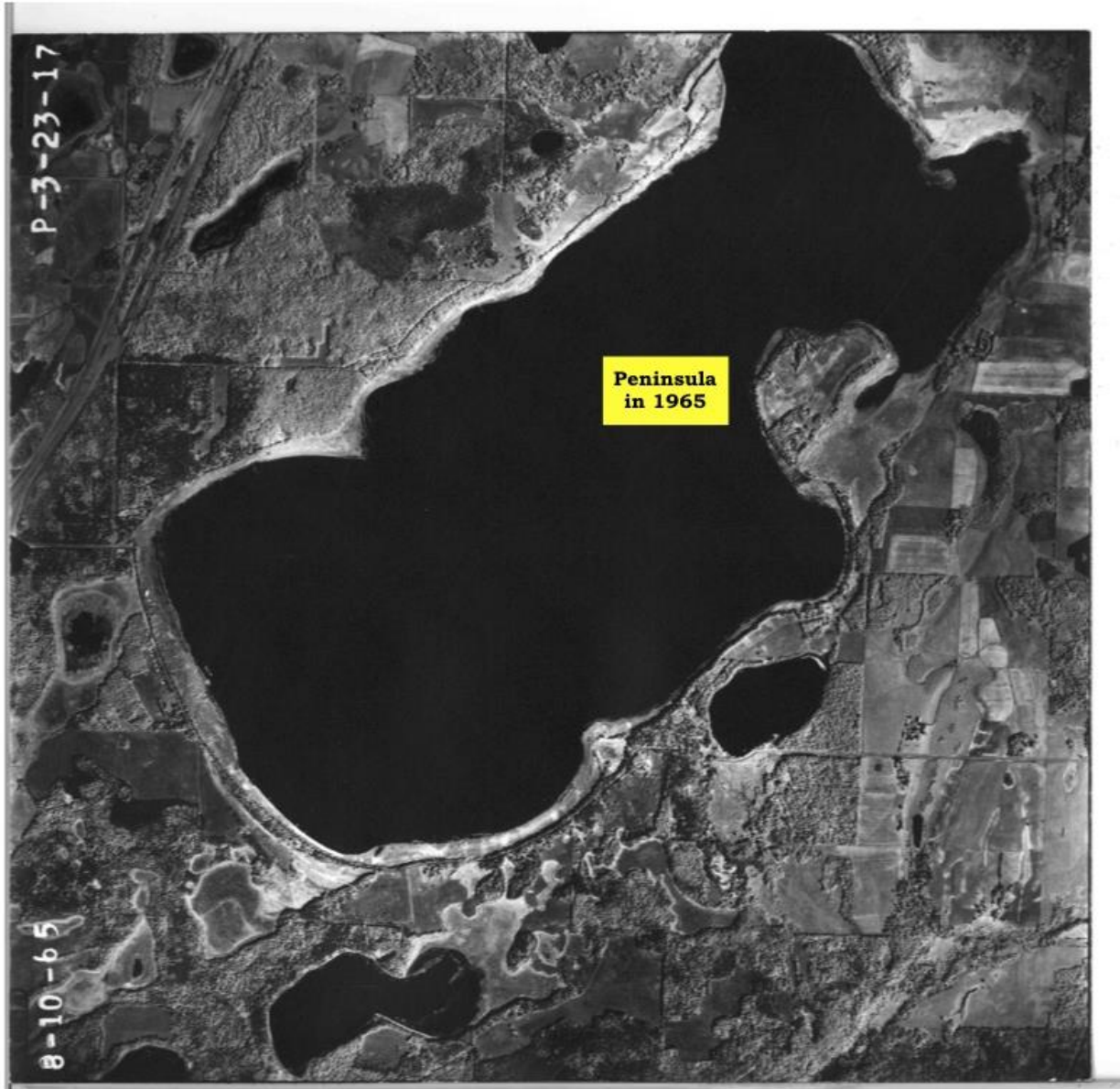


Our mission

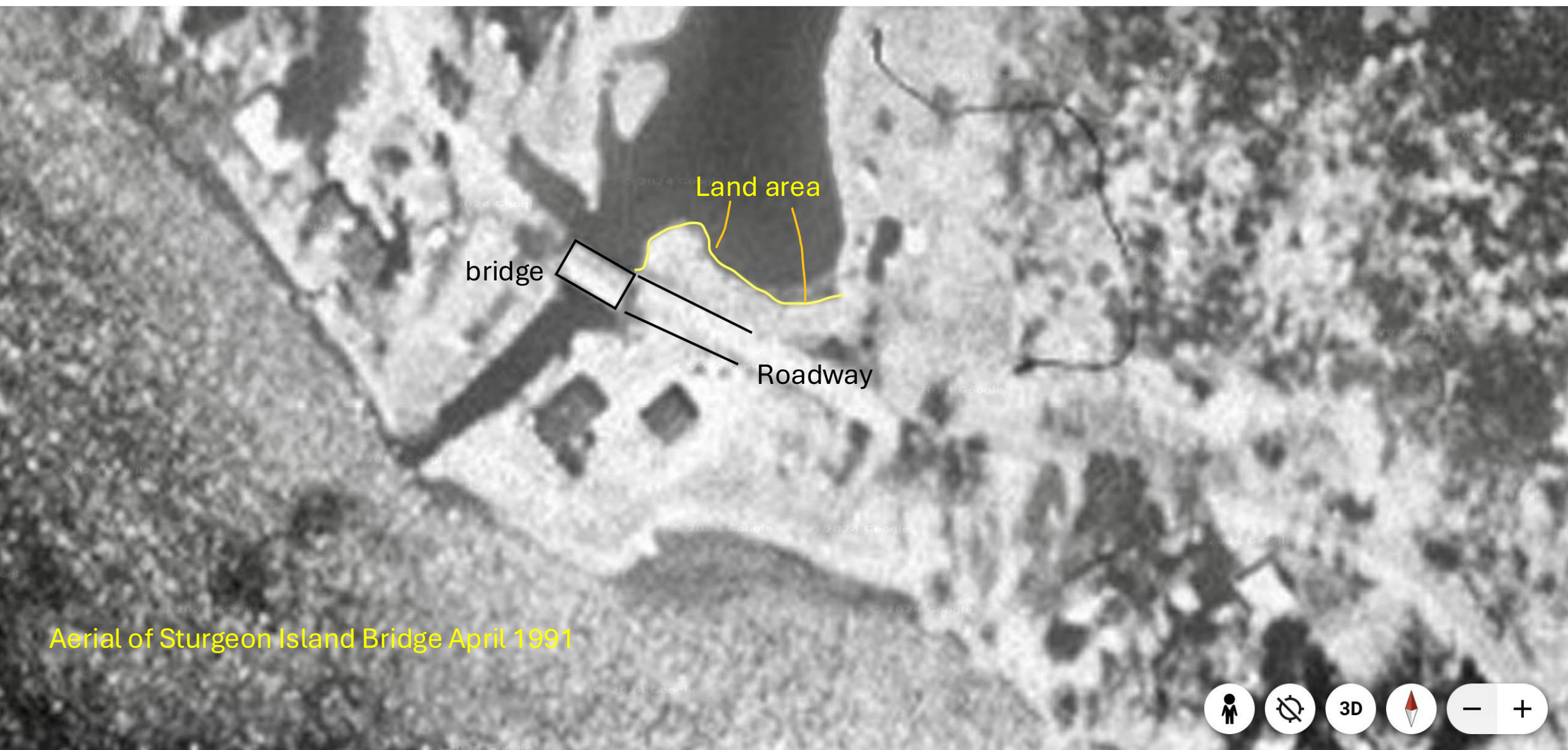
The mission of the Minnesota Department of Natural Resources (DNR) is to work with Minnesotans to conserve and manage the state's natural resources, to provide outdoor recreation opportunities, and to provide for commercial uses of natural resources in a way that creates a sustainable quality of life.



Aerial photo of
Sturgeon Lake dated
10-6-1939



Aerial photo of Sturgeon Lake dated 8-10-1965 just prior to the purchase and development



bridge

Land area

Roadway

Aerial of Sturgeon Island Bridge April 1991



Aerial of Sturgeon Island Bridge September 2009

- House Numbers
- Railroad
- USPLS Sections
- Rivers
- Lakes
- Public Waters**
- Wetlands
- Exempt Wetlands
- Updated Exempt Wetlands
- Resources**
- Floodplain**
- Torrens
- Electric Service Areas
- Zoning Layers**
- Shoreland Zoning Districts
- Lake Shorelands
- Non-Shoreland Zoning
- Kettle River Corridor
- Watercourse Shorelands
- Conservation Easements
- Snake River Exempt Parcels
- All Shorelands
- 2023 Aerial Photography
- 2018 Aerial Photography
- 2011 Aerial Photography
- Pine City
- Pine City Storm Water
- Pine City Sanitary Sewer
- Pine City Water
- Broadband
- Elevation Layers

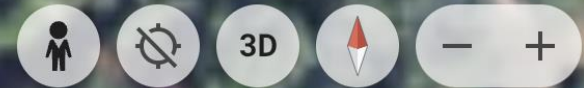


Aerial of Sturgeon Island Bridge 2011

25 ft



Aerial of Sturgeon Island Bridge April 2011





Historical Imagery



2013-05-10



1985

1991

2003

2004

2006

2008

2009

2011

2013

2015

2019

2023

Aerial of Sturgeon Island Bridge May 2013

Layers



3D

100%

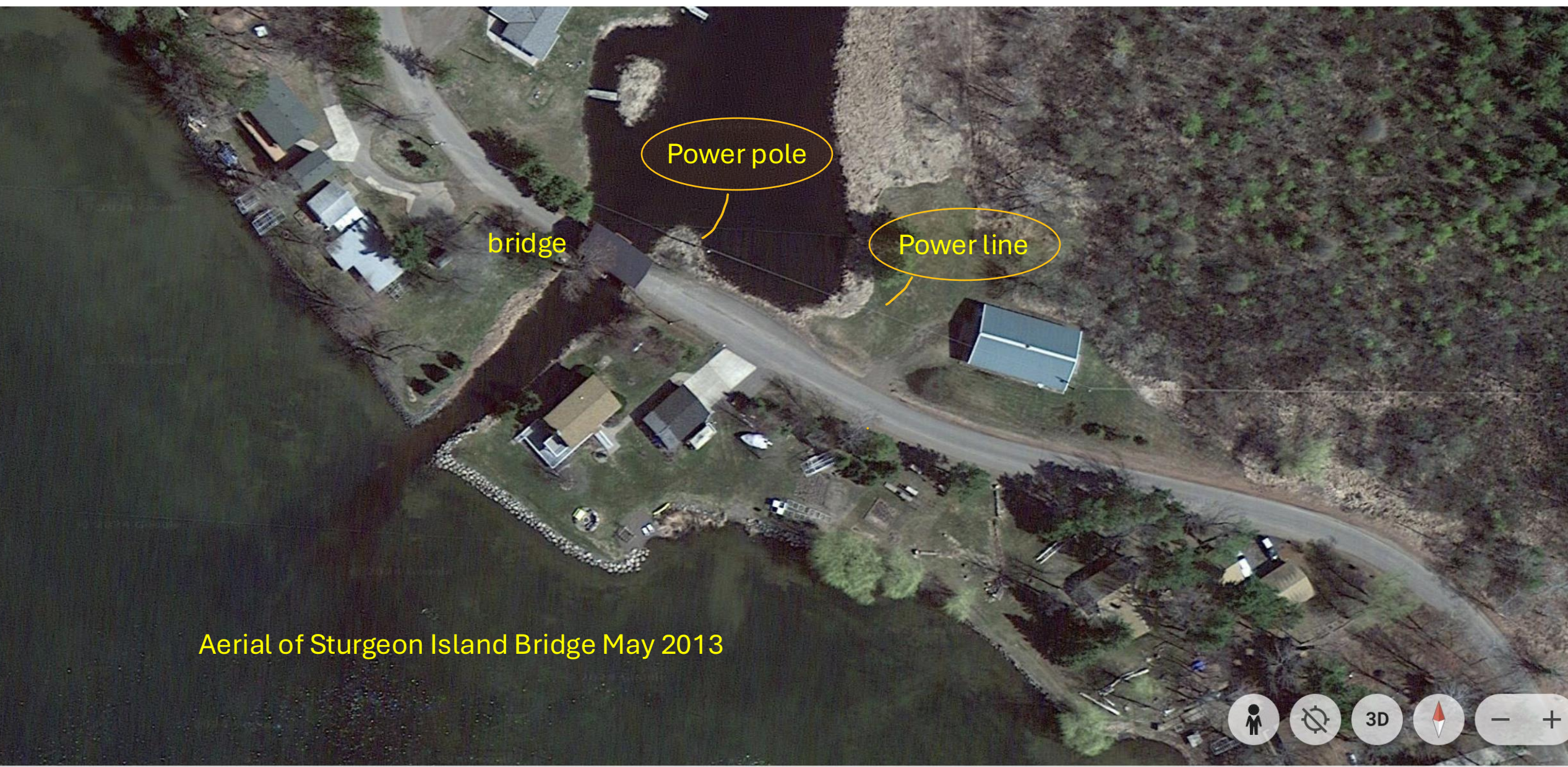
[Data attribution](#)

older-5/10/2013

10 m

Camera: 414 m

46°22'44"



bridge

Power pole

Power line

Aerial of Sturgeon Island Bridge May 2013



Aerial of Sturgeon Island Bridge September 2015



Historical Imagery < 2015-09-13 >



- 1985
- 1991
- 2003
- 2004
- 2006
- 2008
- 2009
- 2011
- 2013
- 2015
- 2019
- 2023



Aerial of Sturgeon Island Bridge September 2015

Layers



3D



Sturgeon Island Bridge October 2012



SE corner of Sturgeon Island Bridge October 2012



SE corner of Sturgeon Island Bridge October 2012



Sturgeon Island Bridge October 2012



© 2024 Google

© 2024 Google

Sturgeon Island Bridge October 2012



Sturgeon Island Bridge October 2012



Sturgeon Island Bridge October 2012



© 2024 Google

© 2024 Google

Sturgeon Island Bridge October 2012

Aerial of Sturgeon Island Bridge December 2024



Aerial of Sturgeon Island Bridge December 2024





Aerial of Sturgeon Island Bridge December 2024



Aerial of Sturgeon Island Bridge December 2024

Aerial of Sturgeon Island Bridge December 2024





Aerial of Sturgeon Island Bridge December 2024

Aerial of Sturgeon Island Bridge December 2024



Old location of power line



Old location of power pole





Aerial of Sturgeon Island Bridge December 2024



Aerial of Sturgeon Island Bridge December 2024



Conclusion

1. The area in question was all land area prior to 1966 and was a peninsula. The island was man made and that whole channel area was dredged and man made as well.
2. We have seen historical photos, and it appears that there may be little no extra fill as previously indicated.
3. The position and elevation of the bridge has changed from the previous one.
4. Since the State would not allow the fishing piers as on the old bridge cover, this area is vital to keep fisherman safe and away from the road and continuing to provide that opportunity to many.
5. As it stands this small sliver of land is important (just like the other three corners are) to protect the road and the bridge as a buffer for when the water rises again as it did in 2019 which at that point flooded the road.

Our mission

The mission of the Minnesota Department of Natural Resources (DNR) is to work with Minnesotans to conserve and manage the state's natural resources, to provide outdoor recreation opportunities, and to provide for commercial uses of natural resources in a way that creates a sustainable quality of life.